



748 Army RCACC

16 Apr 2020

All Ranks Training Session



Schedule

- Attendance
- Kick off from CO
- Boot polishing competition
- Review of topographical maps
- Closing Message from CO
- Swag sharing
- Closing from RSM/DSM



Attendance



- Show us your Army Cadet swag:
 - Army Run
 - CTC
 - GGHG / 748 Army



CO's Opening Message

- Training Schedule
 - Decision has been made to cancel all in-person activities related to the Cadet and JCR programs through to 31 Aug 20.
 - This includes, but is not limited to local training, corps and squadron trips, cadet summer training and activities.
 - All cadets will be credited with having completed this year's training and Star level.
 - Further information to be provided before 31 Aug on next year's plan.
- Summer Courses:
 - All in-person activities are cancelled
 - Operational Planning Group is underway to consider alternatives to in person training for both cadets and CIC officers and options for both cadets and adult staff employment opportunities for the summer 2020



Boot Polishing Competition

- Who can get their boots to look like Capt. Carlsen's?
- Take a photo tonight and post it to the Google Drive.
- Post a photo each week on Wednesday night and the RSM / DSM will pick the most improved boots!





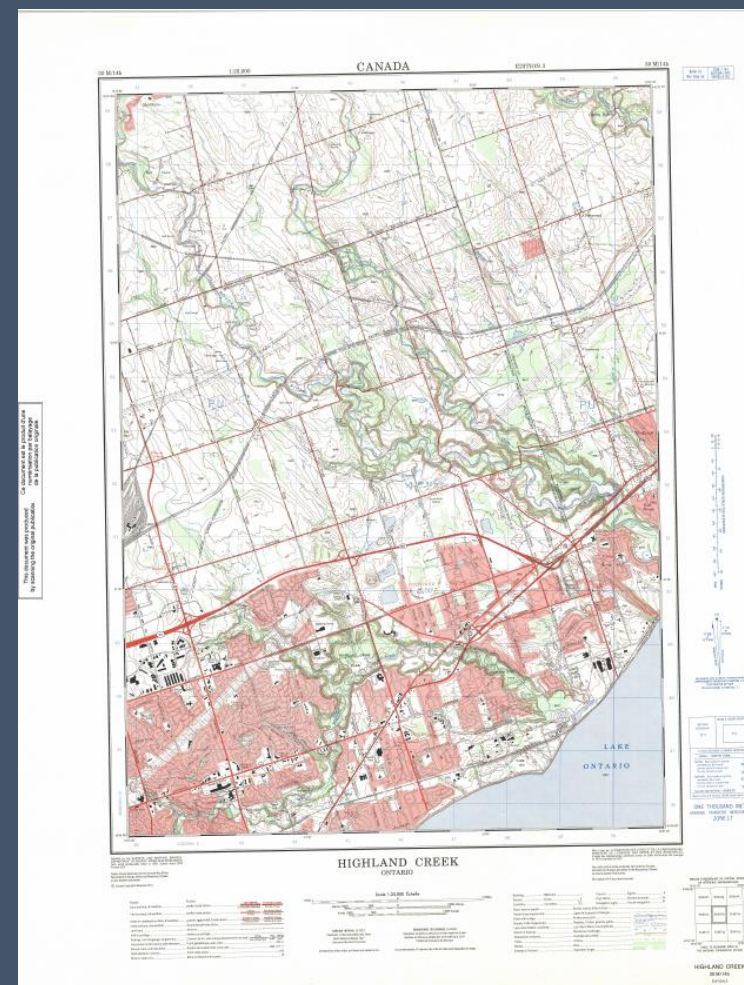
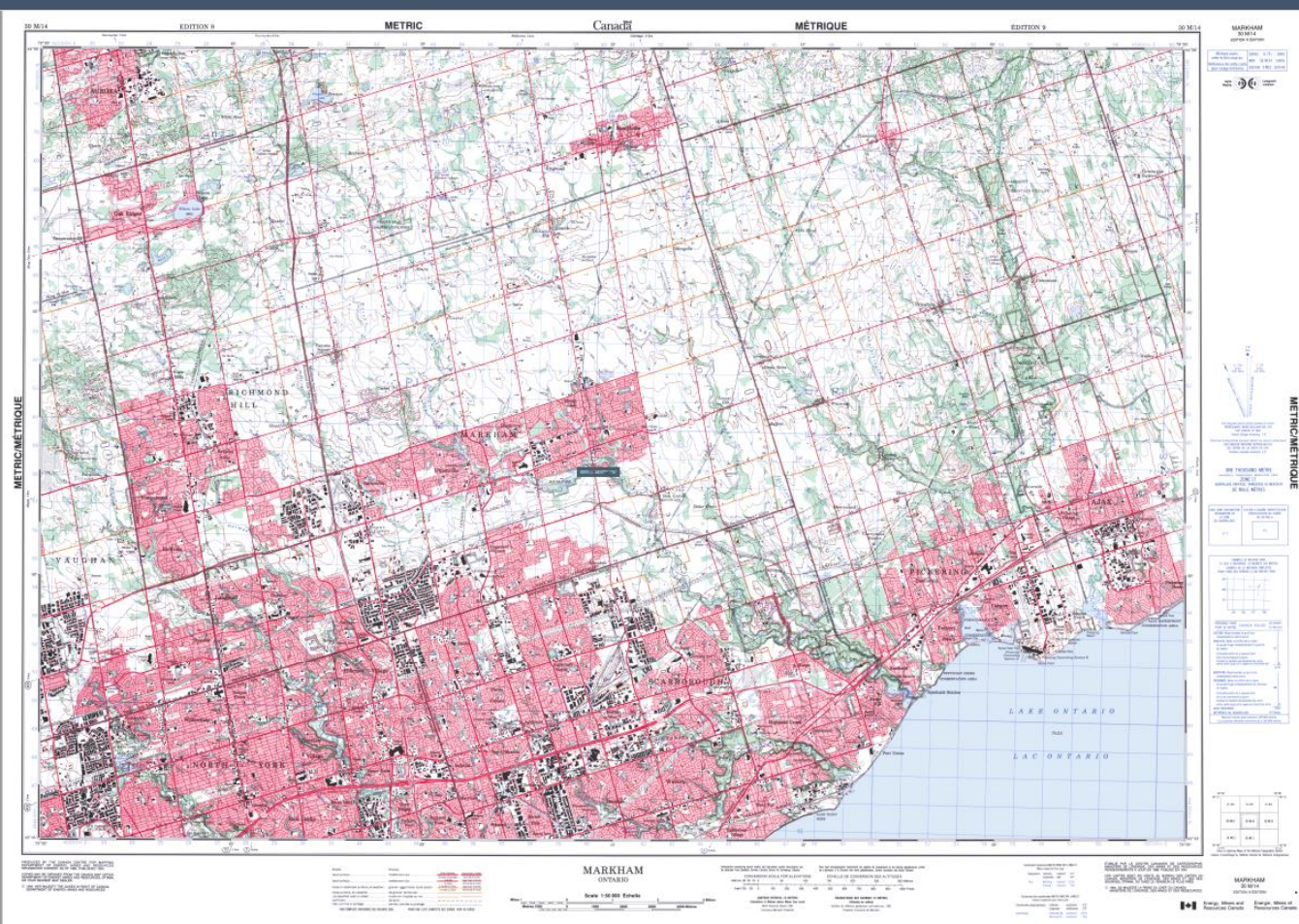
Boot Polishing Tutorials

- https://748armycadets.weebly.com/uploads/2/4/4/5/24452858/polishing_101.pdf
- https://www.youtube.com/watch?feature=player_detailpage&v=qr69cnueOs4



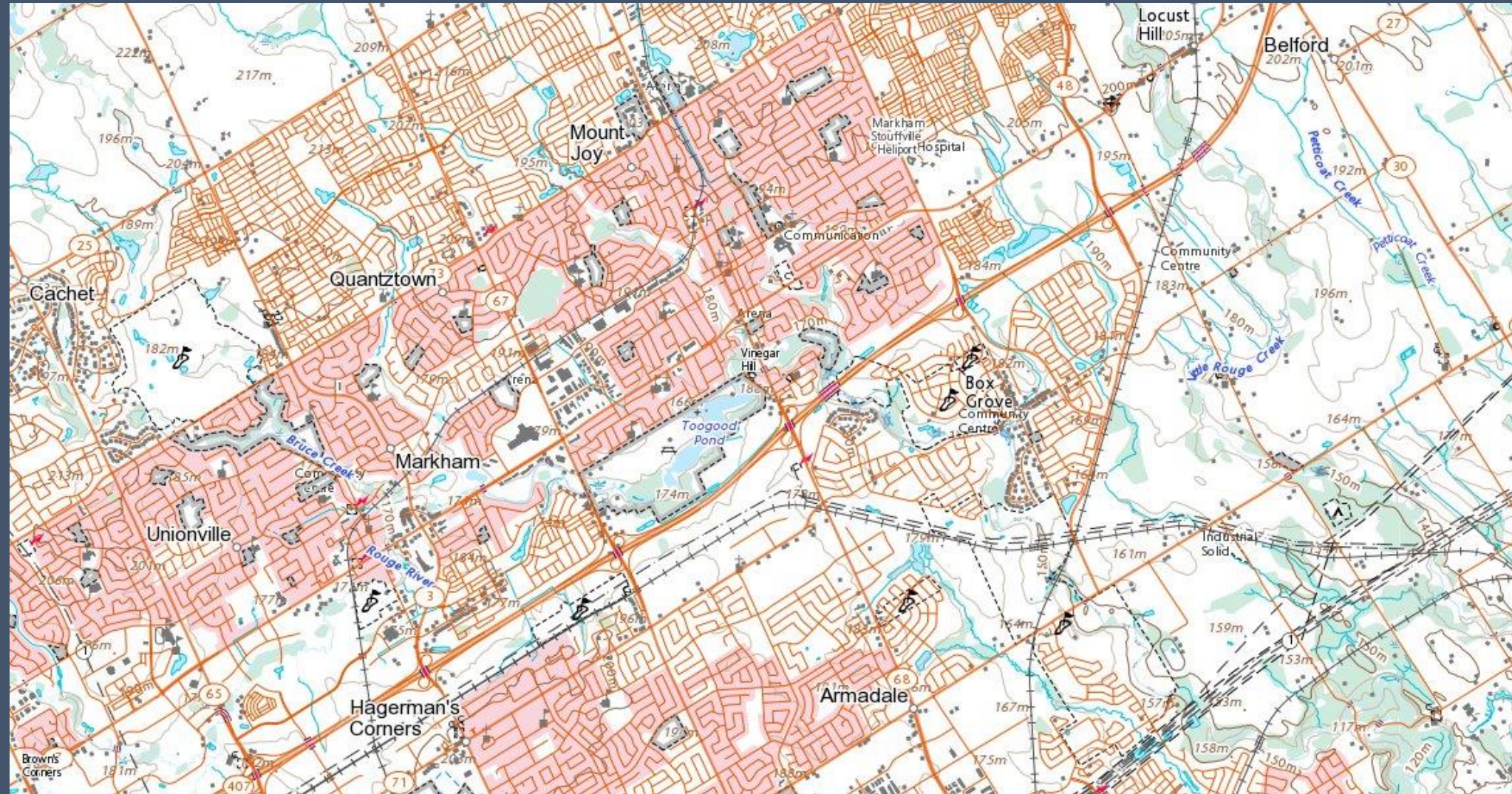
Topographical Map Review

- 1:50,000 Map of Markham
- 1:25,000 Map of Box Grove





Topographical Map Review

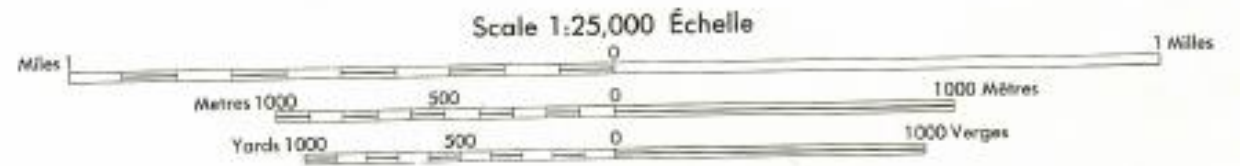




Topographical Map Review

© Copyright 1974

Roads:	Routes:	dual highway	more than 2 lanes
hard surface, all weather.....	pavée, toute saison.....	2 chaussées séparées	plus de 2 voies
hard surface, all weather.....	pavée, toute saison.....	2 lanes	less than 2 lanes
loose or stabilized surface, all weather.....	gravier aggloméré, toute saison.....	2 voies	moins de 2 voies
loose surface, dry weather.....	de gravier, période sèche.....	2 lanes or more	less than 2 lanes
cart track.....	de terre.....	2 voies ou plus	moins de 2 voies
trail or portage.....	sentier ou portage.....		
Railway, normal gauge, single track.....	Chemin de fer, voie unique (écartement normal).....	siding	stop
Horizontal control point, with elevation.....	Point géodésique, avec cote.....	voie d'écartement	arrêt gare
Bench mark, with elevation.....	Repère de nivellement, avec cote.....		454 Δ
Spot elevation, precise.....	Point coté; précis.....		B.M. 157 →
Mine or open cut.....	Mine ou fosse à ciel ouvert.....		450
			✕



CONTOUR INTERVAL 10 FEET
Elevations in Feet above Mean Sea Level
North American Datum 1927
Transverse Mercator Projection

ÉCARTÉMENT DES COURBES 10 PIEDS
Élévations en pieds au-dessus du niveau moyen de la mer
Système de référence géodésique nord-américain, 1927
Projection transverse de Mercator

Communities within cities and towns are named in red.

Les communautés à l'intérieur des cités et villes sont désignées en rouge.

Building.....	Bâtiment.....	Church.....	Église.....
School.....	École.....	Post Office.....	Bureau de poste.....
Cemetery.....	Cimetière.....	Navigation Light.....	Feu de navigation.....
Rock, bare or awash.....	Roche, nue ou à fleur d'eau.....		
Power transmission line.....	Ligne de transport d'énergie.....		
River with bridge.....	Rivière avec pont.....		
Rapids, Falls; large, small.....	Rapides, Chutes; grands, petits.....		
Lake intermittent, indefinite.....	Lac intermittent, rive imprécise.....		
Marsh or Swamp.....	Marais ou marécage.....		
Depression contours.....	Courbes de cuvette.....		
Trees.....	Arbres.....		
Woods.....	Bois.....		
Vineyard, Orchard.....	Vignoble, Verger.....		



Topographical Map Review



Use diagram only to obtain numerical values.
 APPROXIMATE MEAN DECLINATION 1972
 FOR CENTRE OF MAP
 Annual change increasing 1.1'

GRID ZONE DESIGNATION 17 T	100,000 M. SQUARE IDENTIFICATION <div style="border: 1px solid black; width: 80px; height: 80px; margin: 0 auto; display: flex; align-items: center; justify-content: center;">PU</div>
TO GIVE A REFERENCE TO NEAREST 100 METRES	
EXAMPLE: WATER TANK	
EASTING: Read number on grid line immediately to left of point	44
Estimate tenths of a square from this line eastward to point.	8
	448
NORTHING: Read number on grid line immediately below point	53
Estimate tenths of a square from this line northward to point.	2
	532
MILITARY GRID REFERENCE 448532	
Nearest similar grid reference 100,000 metres (about 63 miles)	

ONE THOUSAND METRE
 UNIVERSAL TRANSVERSE MERCATOR GRID
 ZONE 17



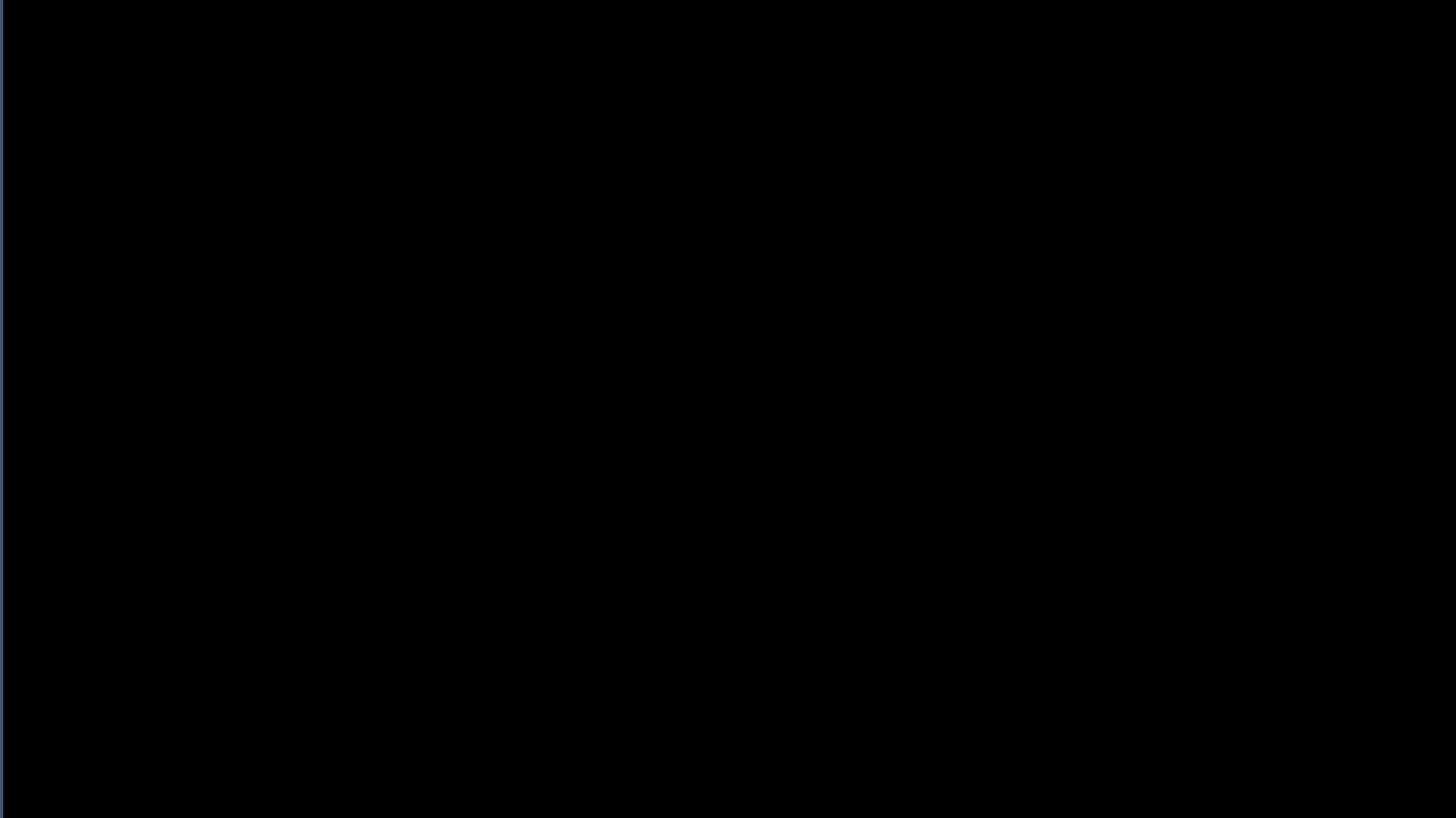
How to read a topographical map

- <https://www.uakron.edu/armyrotc/MS1/8.pdf>



How to read a topographical map

<https://youtu.be/CoVcRxza8nI>





Topographical Quiz

- On the 1:25000 map of BOX GROVE:
 - Find LHQ (Rouge Bank Community Centre) on the Box Grove Map
 - What is the Latitude / Longitude of the Community Centre?

- On the 1:50000 map of Markham:
 - Find the Markham Arena
 - What is the Latitude / Longitude of the Arena?
 - What is the distance and bearing from the Arena to the Box Grove Community Centre?



CO Closing Message





RSM/DSM Closing





Next Week

- Check out who has been working on their boots
- Uniform Prep
- How to use a compass and not get lost in Markham
- Vimy Ridge